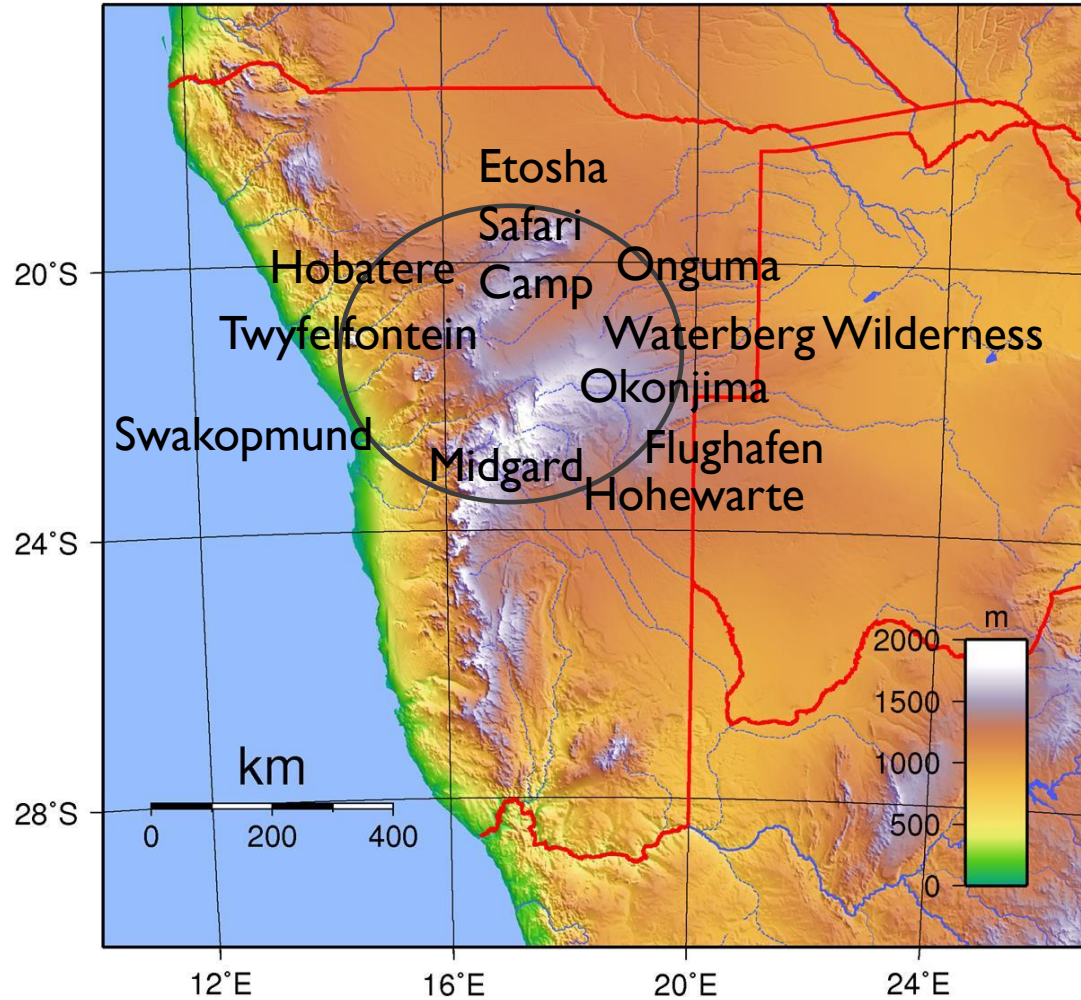




NAMIBIA NOW



- MAP
- TOUR OFFER
- YOUR NAMIBIA TRAVEL PLAN
- RULES & REGULATIONS please visit our website
- RATES
- CONTACT US
- JOIN US IN NAMIBIA Tour and Safari cc
PoBox 277, Outjo Namibia
- Peter Kienitz +264-81-3330218
- Iris Kienitz +264-81-7665277
- info@join-us-in-namibia.com
- www.join-us-in-namibia.com



JOIN US IN
NAMIBIA

YOUR NAMIBIA

TRAVEL ROUTE ** MOPANE

MIDGARD + SWAKOPMUND +
DAMARALAND + ETOSHA +
WATERBERG + OKONJIMA +
WINDHOEK

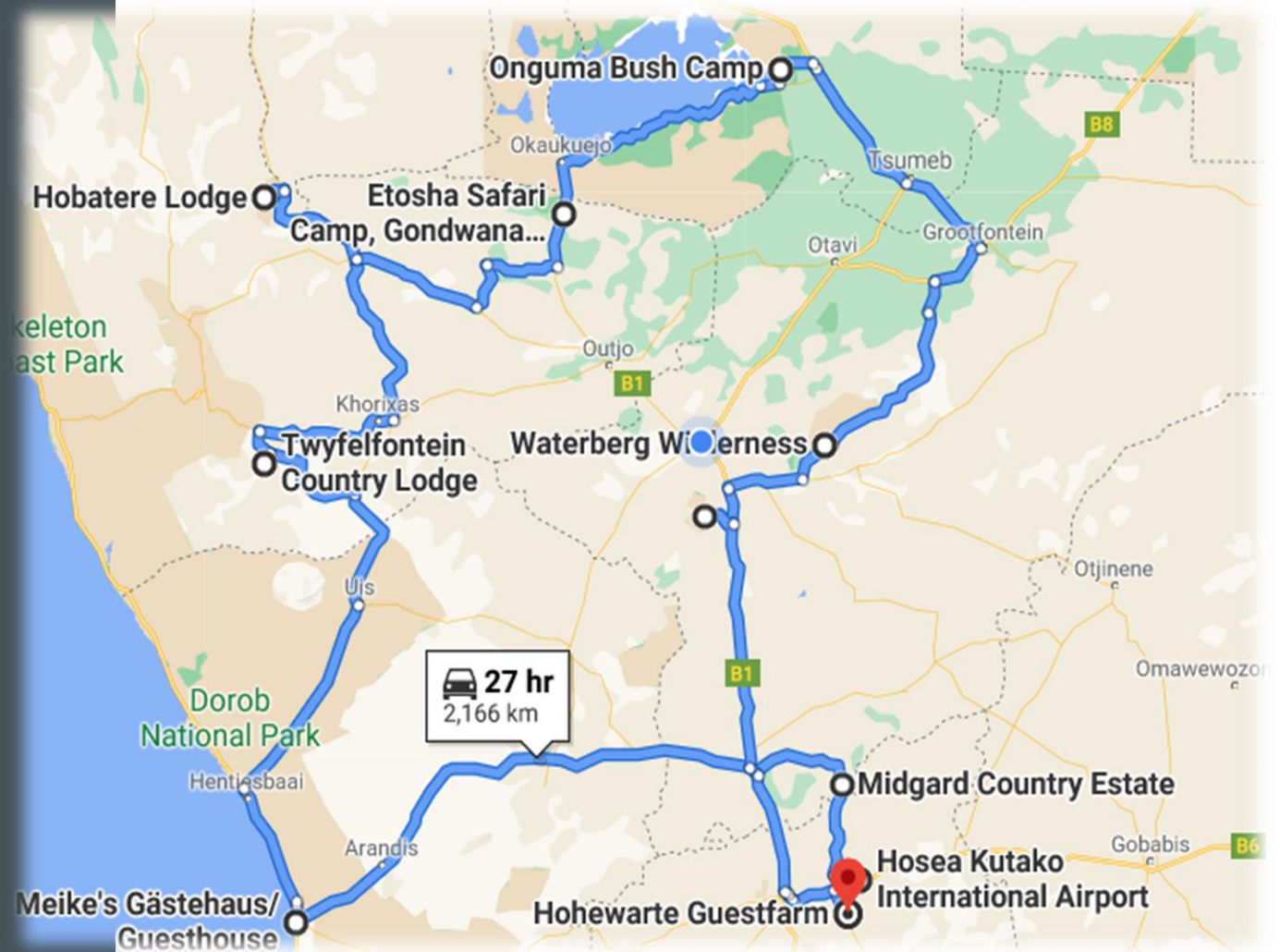
TOUR OFFER BY PETER & IRIS KIENITZ, JOIN US IN NAMIBIA

Selfdrive or guided trip

- **Day 1.** Arrival at **Windhoek International Airport**, either you pick up your self-drive vehicle or be welcomed by your german/english speaking tour guide. First distance will thus not be too far from the airport (as the arrival times differ from morning to afternoon arrivals). On gravel road drive to your first accommodation **MIDGARD Resort** 73km distance today. Basis of booked service: Dinner, Bed and Breakfast.
- **Day 2.** Leave after breakfast passing by Okahandja to visit the woodcrafts market at either the entry or the exit of Okahandja. Drive on tarred road via Wilhelmstal, Karibib and Usakos to the coast town Swakopmund. Bed & Breakfast accommodation at **MEIKES Guesthouse, 2 Nights.** 365km
- **Day 3.** Different options to fill a days program: flight along the coast, living desert tour through the dunes, catamaran trip in WalvisBay harbour
- **Day 4+5.** Drive north alongside the coastal road into Damaraland. Places of interest: burned mountain, organ pipes, rock engravings and –paintings. Overnight **TWYFELFONTEIN** Lodge Dinner, Bed and Breakfast, 2N. Ephemeral drive to trace desert elephant incl. Approx 288km.
- **Day 6.** Drive through Damaraland towards Etosha National Park come to rest at **HOBATERE Lodge**. Optional night game drive offered. Dinner, Bed and Breakfast service.
- **Day 7.** Game drive through Etosha National Park western remote area. Exit park at the southern gate to get to **ETOSHA SAFARI CAMP**, Dinner Bed and Breakfast.
- **Day 8.** Drive through Etosha Nationalpark to the eastern end and overnight **ONGUMA Bush Camp**. Dinner Bed and Breakfast.
- **Day 9.** Visit the Waterberg with the german graveyard and the Plateau park. **WATERBERG WILDERNESS CAMP**. Dinner Bed and Breakfast.
- **Day 10.** Last days adventure **OKONJIIMA home of the Africat** offers afternoon and early morning activities. Dinner Bed and Breakfast and one active incl.
- **Day 11.** Drive back towards our capital Windhoek and enjoy your last evening under African Sky at **HOHEWARTE GF**, Dinner Bed and Breakfast.
- **Day 12.** 31km distance to International Airport for your Departure Flight.

MOPANE TOUR 12 DAYS

MAP



RATES MOPANE TOUR 12 DAYS

Selfdrive TOUROFFER

Double accommodation incl. 4x4 car hire. Toyota double cab
Incl. insurance to minimize excess to 10% of damage

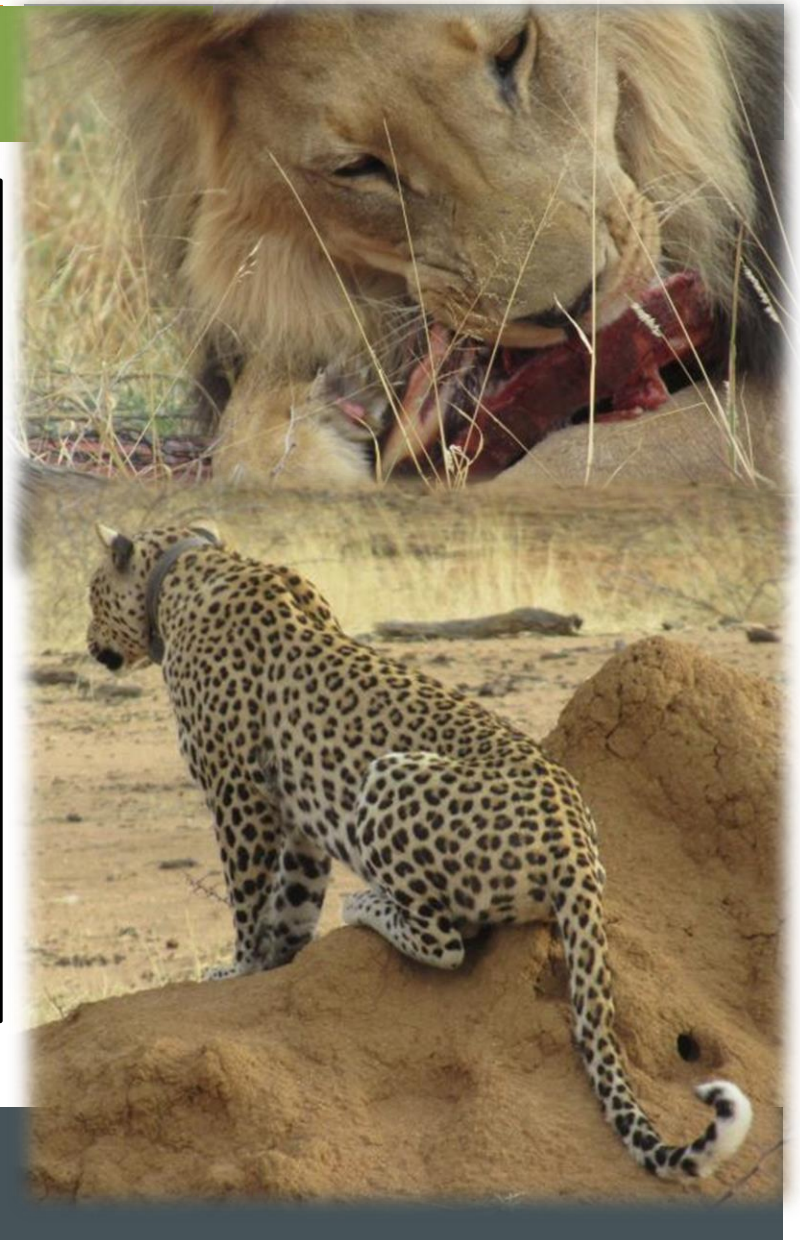
Total for 2 Persons N\$ 84.627.- equals €uro 4736 => per Person €uro 2369 sharing
Total for 4 Persons N\$ 150.278,- equals €uro 8414 => per Person €uro 2103 sharing

Guided trip TOUROFFER incl. tour guide and tour vehicle incl. entrance fees

2 Persons	3 Persons	4 Persons
N\$135.273	N\$176.568	N\$203.524
Per person €uro 3787.-	per Person €uro 3161.-	per Person €uro 2848.- sharing

Single supplement N\$7170.- = €uro 401

Worked according to exchange rate 17.86 – depending on actual exchange rate on date of payment



OTHER TOURS

- MOPANE 12 DAYS
- EUPHORBIA 17 DAYS
- BAOBAB 11 DAYS
- HODIA 11 DAYS