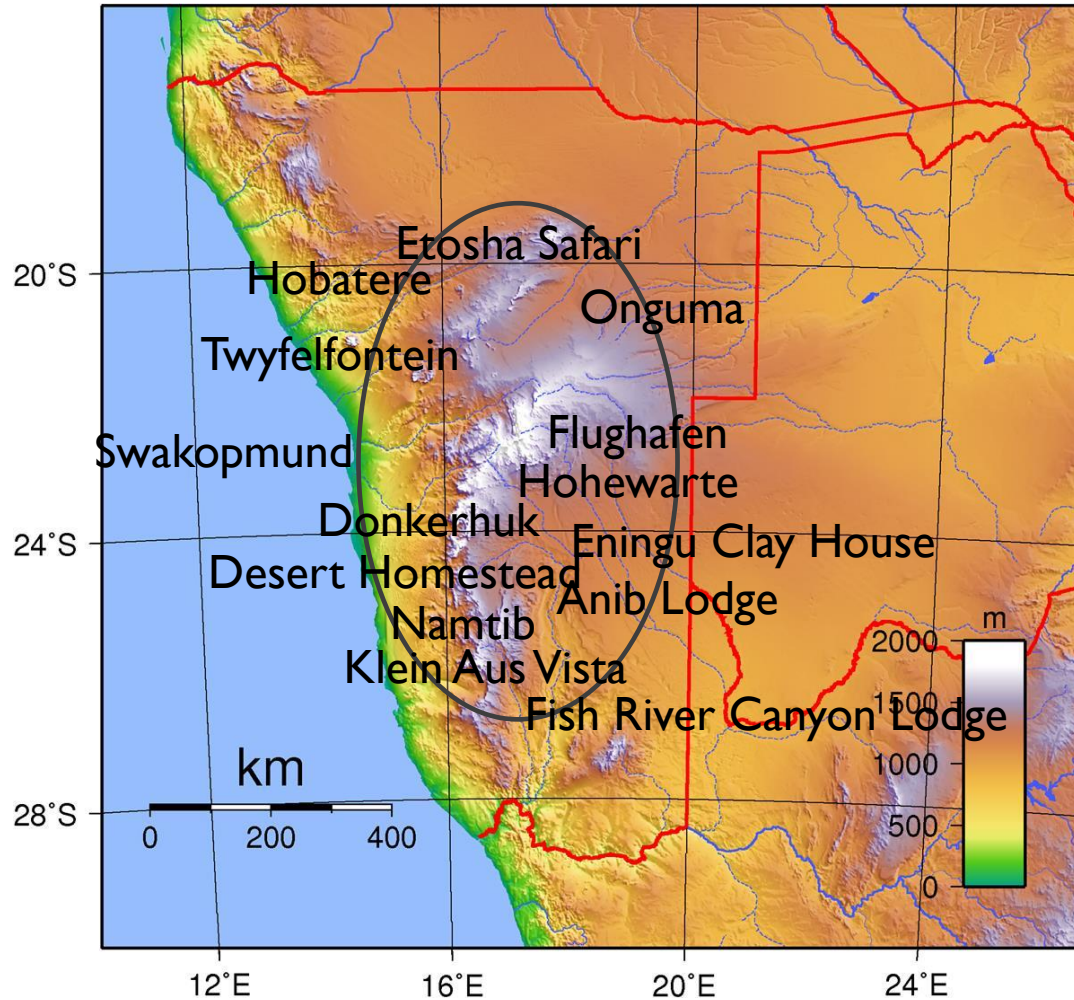




NAMIBIA NOW



- MAP
- TOUR OFFER
- YOUR NAMIBIA TRAVEL PLAN
- RULES & REGULATIONS please visit our website
- RATES
- CONTACT US
- JOIN US IN NAMIBIA Tour and Safari cc
PoBox 277, Outjo Namibia
- Iris Kienitz +264-81-7665277
- Peter Kienitz +264-81-3330218
- info@join-us-in-namibia.com
- www.join-us-in-namibia.com



JOIN US IN NAMIBIA

YOUR NAMIBIA

EUPHORBIA TOUR

TRAVEL ROUTE

ENINGU + ANIB + FISH RIVER + KLEIN
AUS + LÜDERITZ + NAMTIB DESERT
LODGE + DESERT HOMESTEAD +
SOOSUSVLEI + DONKERHUK +
SWAKOPMUND COAST +
TWYFELFONTEIN + HOBATERE +
ETOSHA SAFARI + ONGUMA +
HOHEWARTE WINDHOEK

RATES EUPHORBIA TOUR

17 DAYSTOUR

Selfdrive **TOUROFFER**

Double accommodation incl. 4x4 car hire Toyota couple cab
Incl insurance to minimize excess to 10% of damage

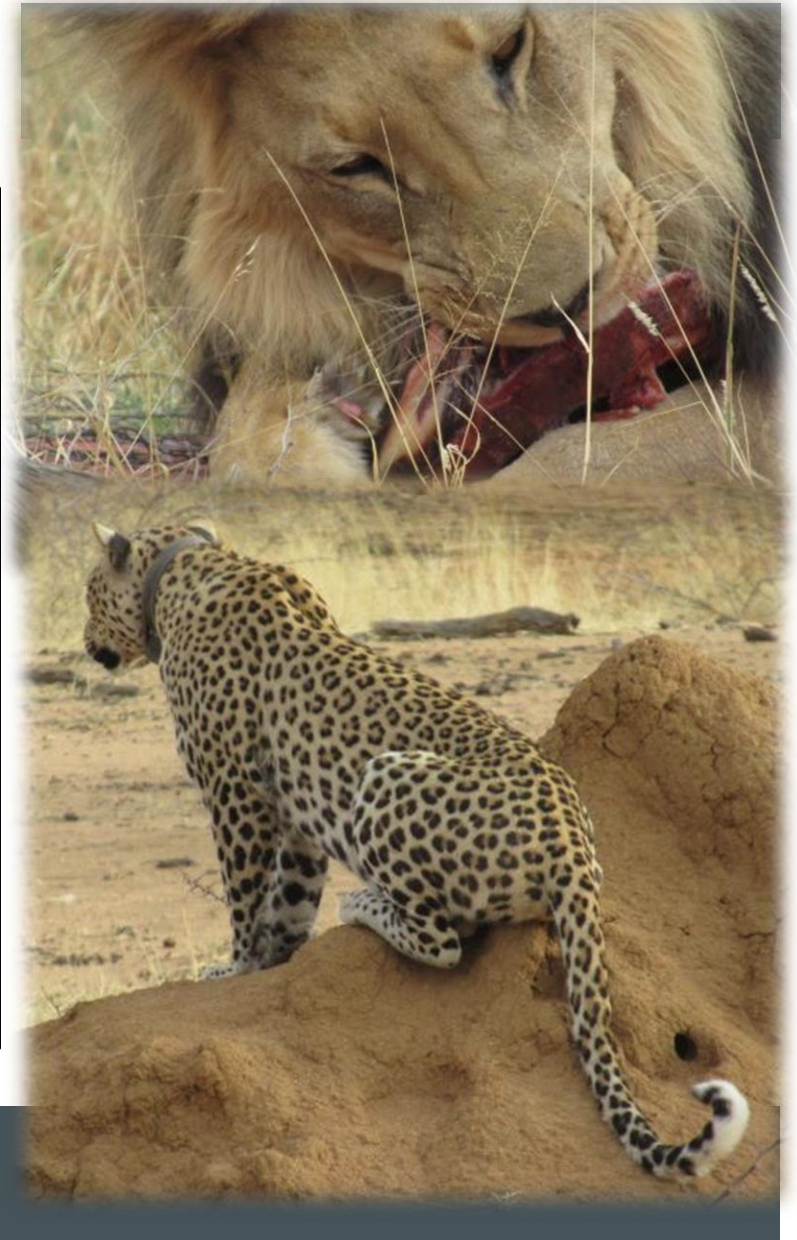
**2 Persons total N\$ 119.159.- rate according to exchange rate 17.86
= EURO 6672 (per person rate € 3336)**

**4 Persons total N\$ 207.430,- rate according to exchange rate 17.86
= EURO 11614 (per person rate € 2903.-)**

Guided trip **TOUROFFER incl tour guide and tour vehicle incl.
entrance fees (according to exchange rate 17.86)**

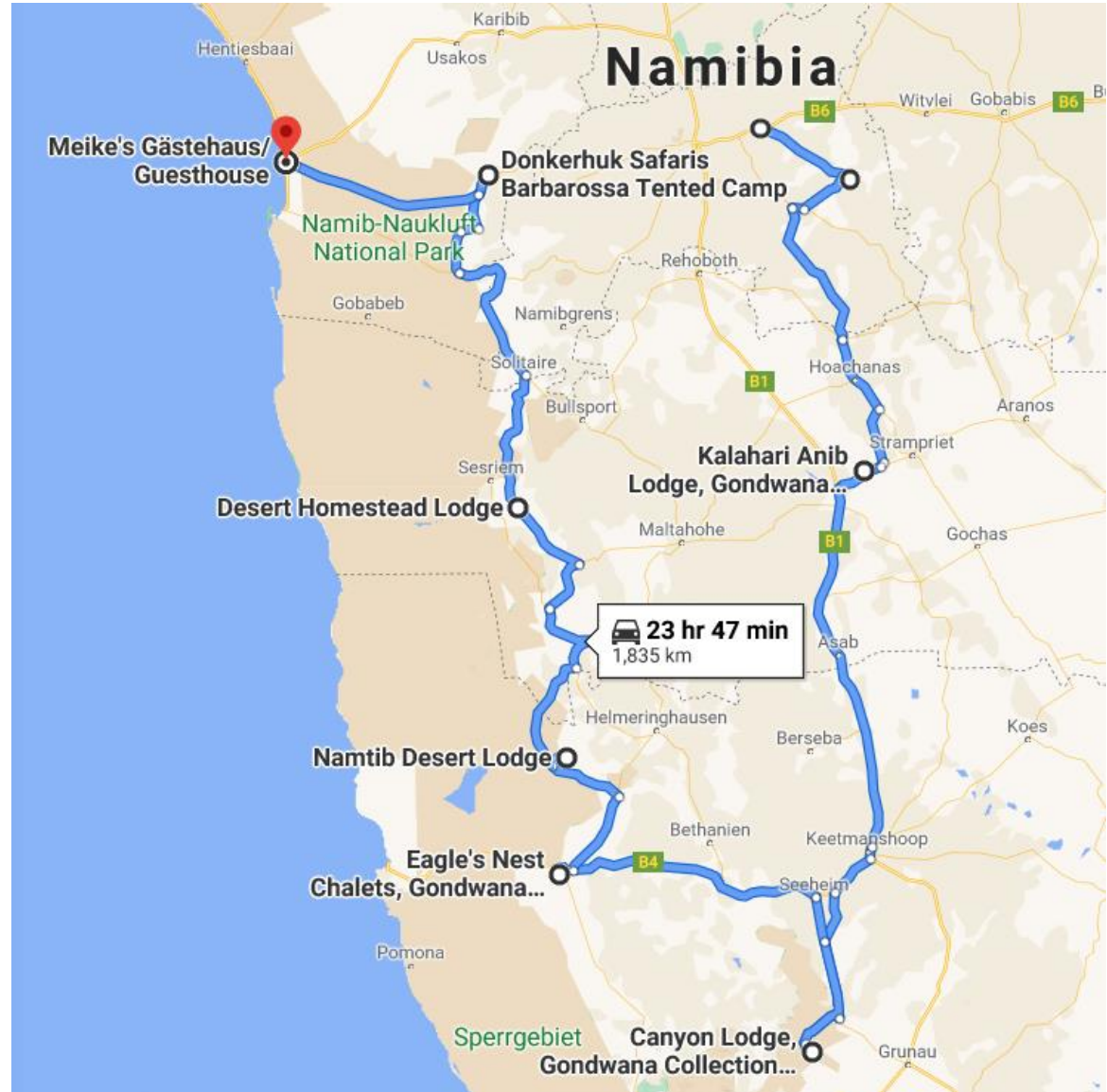
2 Persons	3 Persons	4 Persons
N\$177.058	N\$229.630	N\$265.329.-
pP € 4956	pP € 4128	pP € 3714

Single supplement N\$ 8436.- = EURO 471



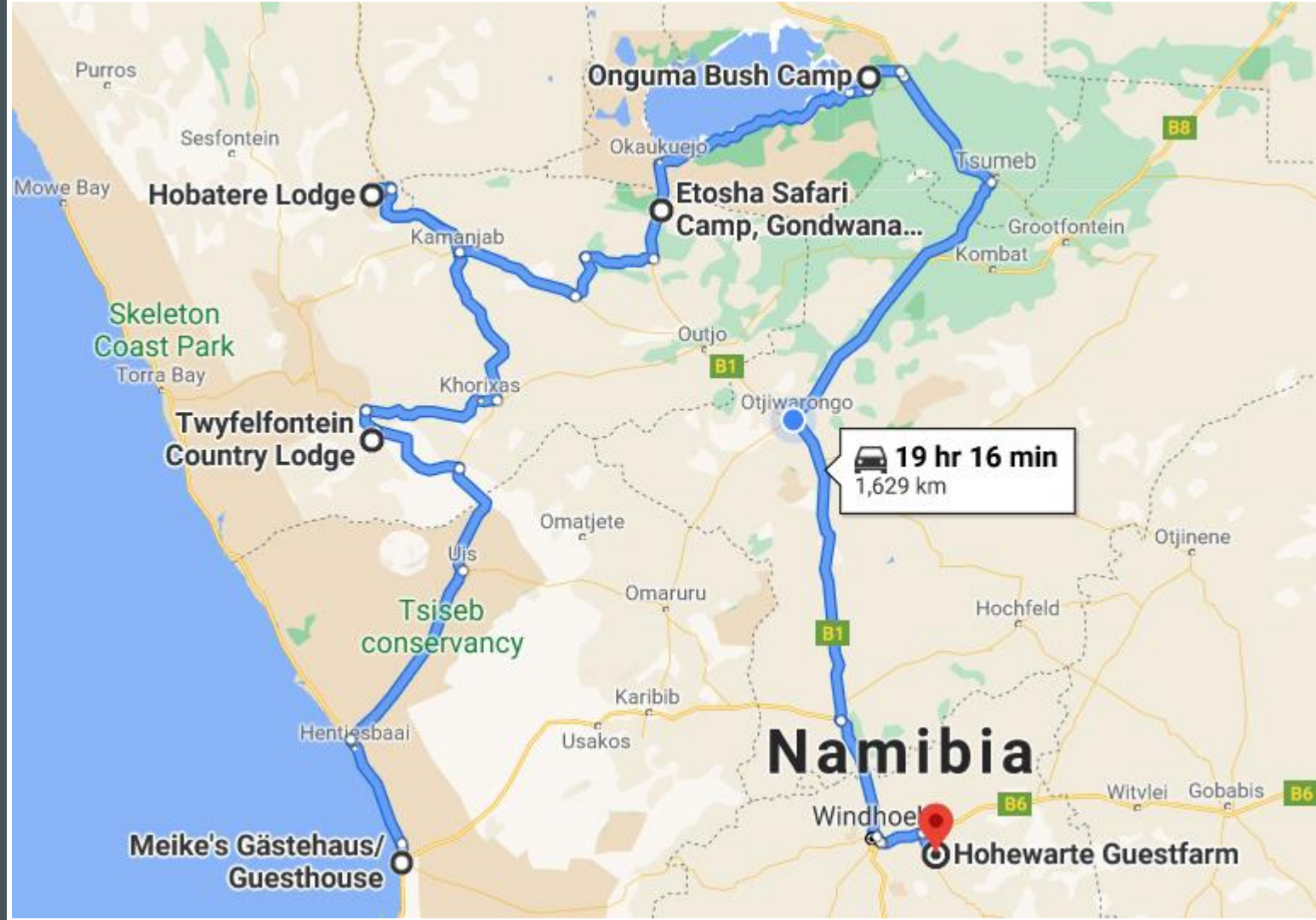
EUPHORBIA TOUR 17 DAYS

HERE MAP
DAYS I - II



EUPHORBIA TOUR

HERE MAP
DAYS 12 - 17



YOUR TRAVEL PARTNERS

Peter & Iris Kienitz

